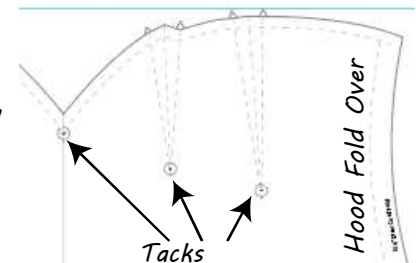


Pattern 1001, 1002, 1003

Definitions:

Self Fabric: The main fabric to be used in the outfit.

Tacks: Points circled on the pattern to be transferred to the material signifying important sewing points. In the example to the right, this point marks 1/4 inch above the end of the darts.



Recommended methods to tack:

Sew one loop leaving the ends as a "thread dot" (see image to left)

Mark with chalk or dissolving fabric marker.

DO NOT PUNCH HOLE IN THE FABRIC

Darts: A folded wedge of fabric sewn down to give the garment shape. At least one end of the wedge ends in the middle of the fabric, as opposed to at the edge where a normal seam would end.



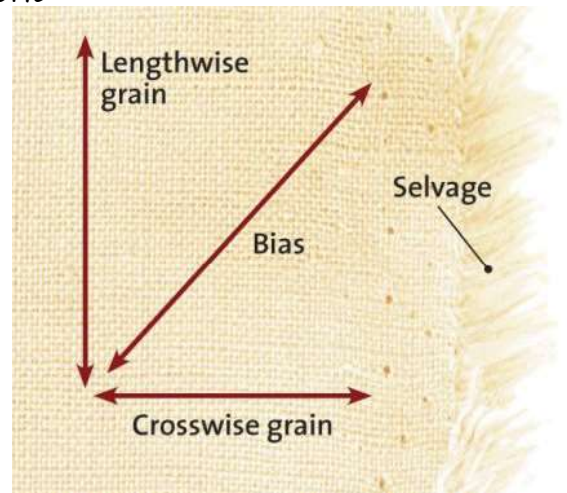
Selvage: The pre-finished edge of a length of fabric.

Cross Grain: 90 degree angle from Selvage.

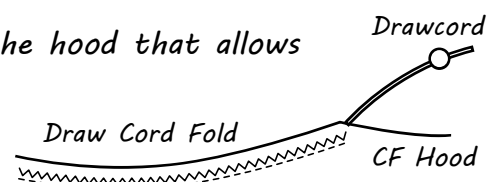
Bias: 45 degree angle from Selvage

Stretch Direction: The direction of greatest stretch, either following the selvage or the cross grain. **NOT THE BIAS.**

Grainline: The direction in which the pattern follows the Selvage. **ALWAYS PARALLEL TO THE SELVAGE.** Double Check the Grainline direction on the pattern by matching the stretch direction with the stretch of the fabric.



Draw Cord: The cord housed around the opening of the hood that allows adjustments in size.



Draw Cord Fold: The fold around the face of the hood which houses the drawcord.